

Wafer Check Valves

Wafer Check Valves Carbon Steel

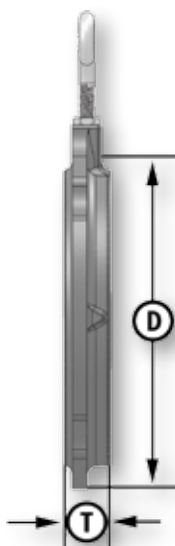
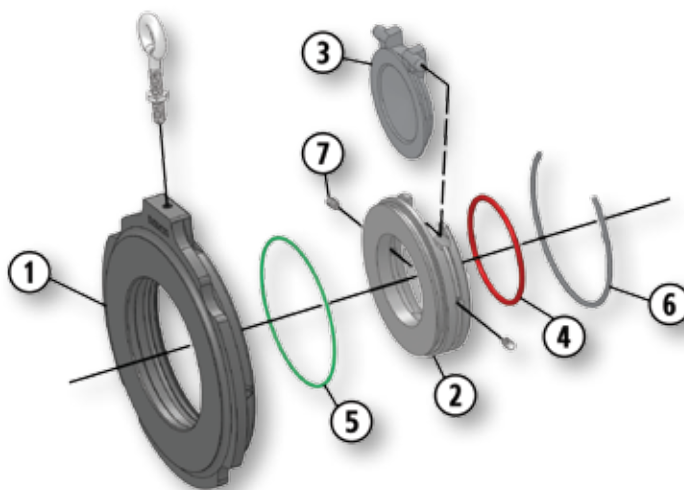


- Thin Pattern Swing Check Valve
- ANSI 600 (1480 PSI WP)
- 2" Through 6"
- Forged Steel Body Construction

- Replaceable Seat Disc Cartridge
- Seal Located in Seat, Thus Protected From Flow
- NACE Standard
- 316 Stainless Steel Disc Standard
- Generally Larger Port Sizes Than Other Brands

Material Description

ITEM	PART NAME	CARBON STEEL SEAT	STAINLESS STEEL SEAT
1	Body	ASTM A105	ASTM A105
2	Seat	Replaceable Carbon Steel	Replaceable 316 Or 17-4PH Stainless Steel
3	Disc	Replaceable 316 Stainless Steel	Replaceable 316 Stainless Steel
4	O-Ring	Seat Seal: Fluorocarbon	Seat Seal: Fluorocarbon
5	O-Ring	Assembly Seal: Buna-N	Assembly Seal: Fluorocarbon
6	Retainer	Stainless Steel	Stainless Steel
7	Set Screw	Stainless Steel	Stainless Steel



Dimensional Data

SIZE	CATALOG NUMBER		PORT	D	T	STUD LENGTH	LBS.
	CARBON STEEL SEAT	STAINLESS STEEL SEAT					
2	2T-600	2T-600S	1.25	4.37	.75	5.25	2.5
3	3T-600	3T-600S	2	5.87	.75	6	4.4
4	4T-600	4T-600S	2.62	7.62	.87	7	8.5
6	6T-600	6T-600S	4	10.50	1.12	8	19