

PARTS LIST - 10" V-6" Dual Port Valves

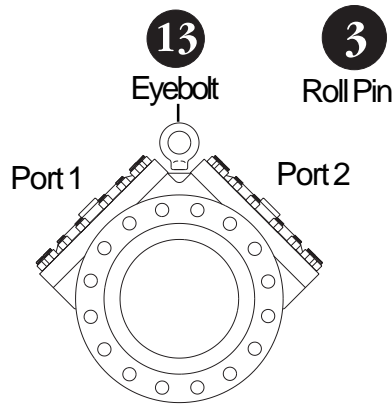
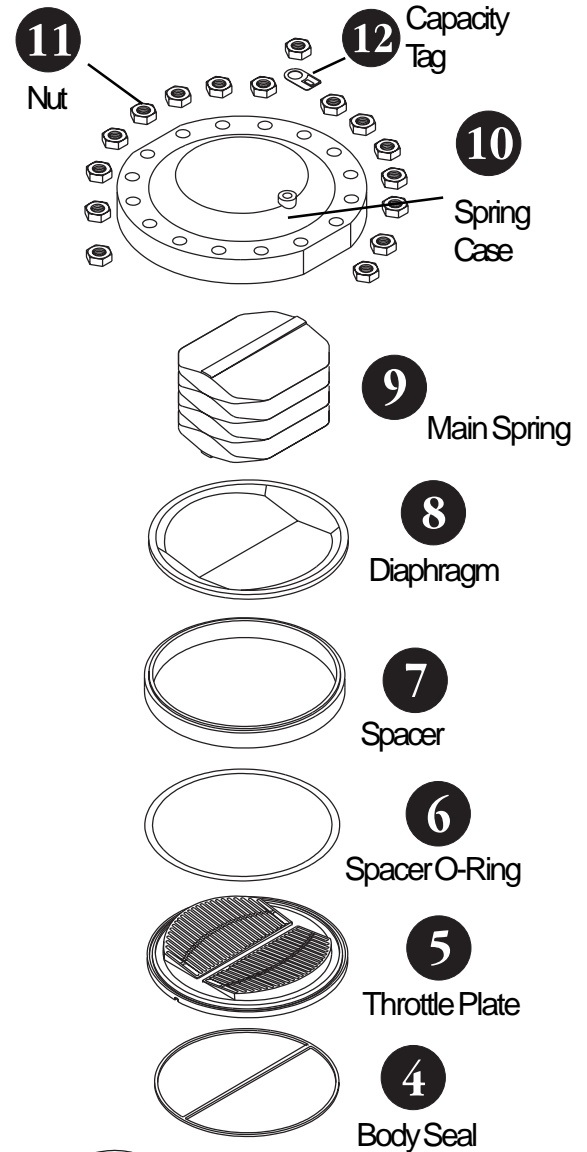
10" V-6
Dual
Port

Includes: 10" V-6" Dual Port Flanged CL 150 - 600

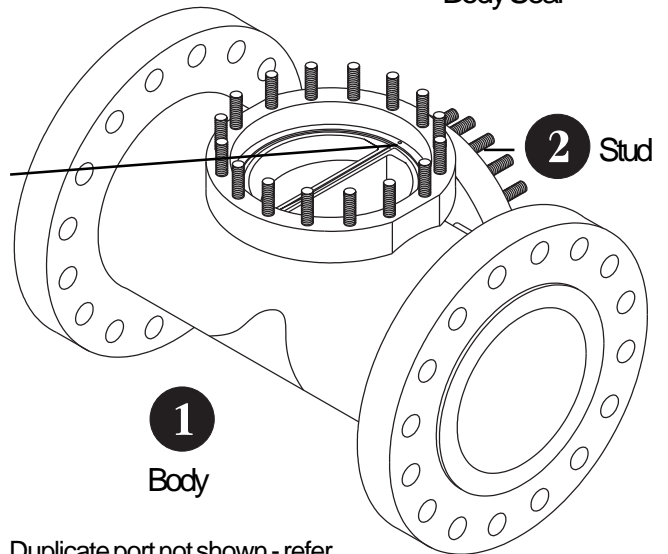
Item	Description	Material	PartNumber	Quantity
1	Body - Single Port 10" CL 150 RF Flanged (FG-57) [†] 10" CL 300 RF Flanged (FG-58) [†] 10" CL 600 RF Flanged (FG-59) [†]	Carbon Steel (A216 Gr. WCB)	110-001-01 110-002-01 110-003-01	1
2	Stud 150 / 300 Class (5/8-11 UNC x 2.75) 600 Class (3/4-10 UNC x 3.50)	ANSI B-7	031-005-01 031-006-01	24 32
3	Roll Pin (3/16 x 1/2)	Steel	035-001-01	4
4	Body Seal	Nitrile	106-007-01	2
5	Throttle Plate 100% Capacity Flowgrid 75% Capacity Flowgrid 50% Capacity Flowgrid 35% Capacity Flowgrid	17-4PHSST	106-004-01 106-022-01 106-012-01 106-023-01	2
5a	100% Capacity Drilled Hole 75% Capacity Drilled Hole 50% Capacity Drilled Hole 35% Capacity Drilled Hole	17-4PHSST	106-026-01 106-030-01 106-033-01 106-032-01	2
6	Spacer O-Ring	Nitrile	021-275-01	2
7	Spacer	Carbon Steel	106-008-01	2
8	Diaphragm 75 Durometer 60 Durometer 80 Durometer Hi-ACN 80 Durometer Lo-ACN	Nitrile / Nylon	106-005-01 106-005-02 106-005-04 106-005-03	2
9	Main Spring Standard Low Differential	301 Stainless Steel	106-006-01 106-013-01	2
10	Spring Case 150 / 300 Class 600 Class	Carbon Steel (A216 Gr. WCB)	106-009-01 106-010-01	2
11	Nut 150 / 300 Class (5/8 UNC) 600 Class (3/4 UNC)	ANSI 2H	032-003-01 032-004-01	24 32
12	Capacity Tag 150 / 300 Class (5/8) 600 Class (3/4)	Brass	100-013-01 100-014-01	1
13	Eyebolt (3/4)	Steel	033-002-01	1

Boxed items indicate recommended spare parts

[†] (FG-*) Indicates stock number for the Flowgrid Valve Assembly associated with each body



End View



Duplicate port not shown - refer to end view