

100 SERIES mini VALVES



The **New NOSHOK 100 Series Mini Valve** is a big valve in a little package. Available in electroless nickel plated steel, electropolished stainless steel and brass, the **Mini Valve** was designed with your toughest applications in mind. All are equipped with both a Viton® O-Ring seal and a Teflon® back-up ring below the stem threads to protect the **Mini Valve** from corrosion and galling. The stem threads are rolled for strength and ease of operation, and the metal-to-metal hard seat design is *100% Helium leak tested* to 1×10^{-4} ml/s at 200 psi on each **Mini Valve**.

At a maximum pressure rating of 6000 psi for the Stainless Steel and Steel models and a 3000 psi rating for the Brass models, the **NOSHOK Mini Valve** has much to offer for such a little valve. With a variety of optional handles to choose from and the panel mount option, the **Mini Valve** will fit perfectly into any application.

Ordering Information

PART NUMBER	CONNECTION	MATERIAL
101 MMB	1/8 NPT Male-Male	Brass
102 MMB	1/4 NPT Male-Male	Brass
101 MMC	1/8 NPT Male-Male	Steel
102 MMC	1/4 NPT Male-Male	Steel
101 MMS	1/8 NPT Male-Male	Stainless Steel
102 MMS	1/4 NPT Male-Male	Stainless Steel
101 MFB	1/8 NPT Male-Female	Brass
102 MFB	1/4 NPT Male-Female	Brass
101 MFC	1/8 NPT Male-Female	Steel
102 MFC	1/4 NPT Male-Female	Steel
101 MFS	1/8 NPT Male-Female	Stainless Steel
102 MFS	1/4 NPT Male-Female	Stainless Steel
101 FFB	1/8 NPT Female-Female	Brass
102 FFB	1/4 NPT Female-Female	Brass
101 FFC	1/8 NPT Female-Female	Steel

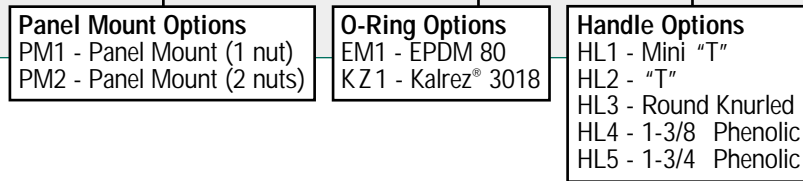
PART NUMBER	CONNECTION	MATERIAL
102 FFC	1/4 NPT Female-Female	Steel
101 FFS	1/8 NPT Female-Female	Stainless Steel
102 FFS	1/4 NPT Female-Female	Stainless Steel
101 MFAB	1/8 NPT Male-Female Angle	Brass
102 MFAB	1/4 NPT Male-Female Angle	Brass
101 MFAC	1/8 NPT Male-Female Angle	Steel
102 MFAC	1/4 NPT Male-Female Angle	Steel
101 MFAS	1/8 NPT Male-Female Angle	Stainless Steel
102 MFAS	1/4 NPT Male-Female Angle	Stainless Steel
101 FFAB	1/8 NPT Female-Female Angle	Brass
102 FFAB	1/4 NPT Female-Female Angle	Brass
101 FFAC	1/8 NPT Female-Female Angle	Steel
102 FFAC	1/4 NPT Female-Female Angle	Steel
101 FFAS	1/8 NPT Female-Female Angle	Stainless Steel
102 FFAS	1/4 NPT Female-Female Angle	Stainless Steel

When ordering options please refer to the Part Number Construction guide below for the appropriate suffix. Please note that the standard O-Ring in all the **NOSHOK Mini Valves** are Viton® and the standard handles are:

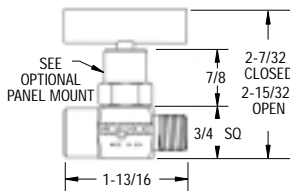
Brass: Round Knurled (HL3) • **Steel:** Mini "T" (HL1) • **316SS:** Mini "T" (HL1)

The handle material will always match the material of the valve, unless otherwise specified. For example, the round knurled (HL3) on a 102 FFB will be brass. When only the standard configuration is needed, no additional designations are necessary. Please consult the factory for special application requests.

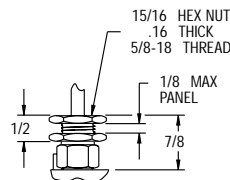
Part Number Construction: **102 FFC - PM2 - EM1 - HL4**



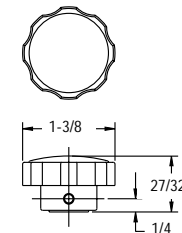
General Dimensions



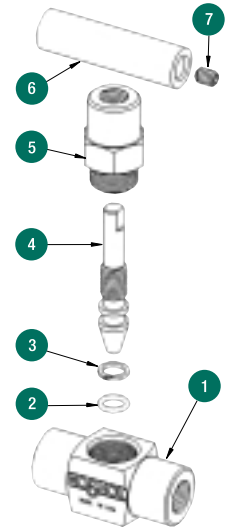
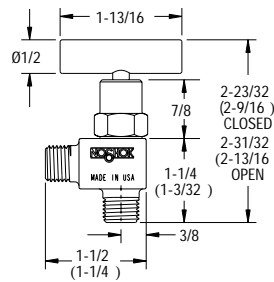
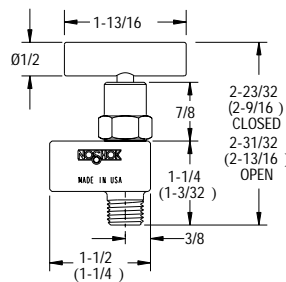
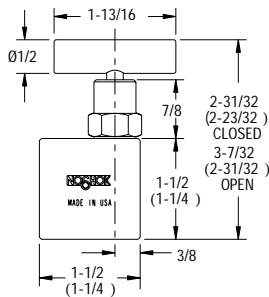
Male-Female w/"T" handle option



PANEL MOUNT DETAIL



PHENOLIC HANDLE HL4



- 1 Mini Valve Body
- 2 Viton® O-Ring
- 3 Teflon® Back-up Ring
- 4 Mini Valve Stem
- 5 Mini Valve Bonnet
- 6 Mini Valve "T" Handle
- 7 Set Screw

For flow characteristics refer to page 14

Kalrez® and Viton® are registered trademarks of DuPont Dow Elastomers
Teflon® is a registered trademark of the DuPont Company

Technical Data:

Maximum Pressure Rating:	Orifice size:	0.172"
Steel: 6000 psi	Flow Coefficient:	0.42
Stainless Steel: 6000 psi	Standard O-Ring:	Viton®
Brass: 3000 psi	Standard Back-up Ring:	Teflon®