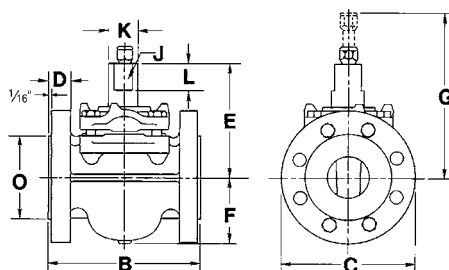


Nordstrom Screwed Gland-Type Iron Plug Valves

Short Pattern

400 CWP (27.6 bar)
800 psig (55.2 bar) Test

Figure 305 Flanged, Wrench Operated,
Sizes 2, 3 and 4



Size	NPS	2	3	4
	DN	50	80	100
Face-to-face, flanged (includes 1/16" raised face), Figure 305	B	7.25	9.25	10.50
		184	235	267
Diameter of flange	C	6.5	8.3	10.0
		165	211	254
Thickness of flange (includes 1/16" raised face)	D	1.06	1.19	1.50
		27	30	38
Number and size of tapped holes in each flange*	—	four 5/8"	two 3/4"	
Center to top of stem	E	5.7	7.0	7.5
		145	178	191
Center to bottom of body	F	3.3	4.3	4.8
		84	109	122
Clearance required to remove sealant fitting	G	8.3	9.6	10.1
		211	244	257
Width of stem flats	J	1.12	1.38	1.38
		28	35	35
Diameter of stem	K	1.59	1.97	1.97
		40	50	50
Height of stem flats	L	1.4	1.8	1.8
		36	46	46
Diameter of 1/16" raised face	O	4.1	5.6	6.9
		104	142	175
Size of wrench	—	K-8	M-8	M-8
Length of wrench	—	14.0	21.0	21.0
		356	533	533
Size of Sealant Stick	—	B	B	B
Weight (approx.), Figure 305	—	37	75	105
		17	34	48

Flanges are drilled to ASME Class 250 Cast Iron Flange Standard Template. For drilling and bolting data, see page 45.

Figure 305 valves conform to the following standards where applicable: ASME B16.10; API 5B; ASTM A126, Class B; and MSS SP-78. See page 38.

*Studs or capscrews required. For sizes and lengths, see page 48.